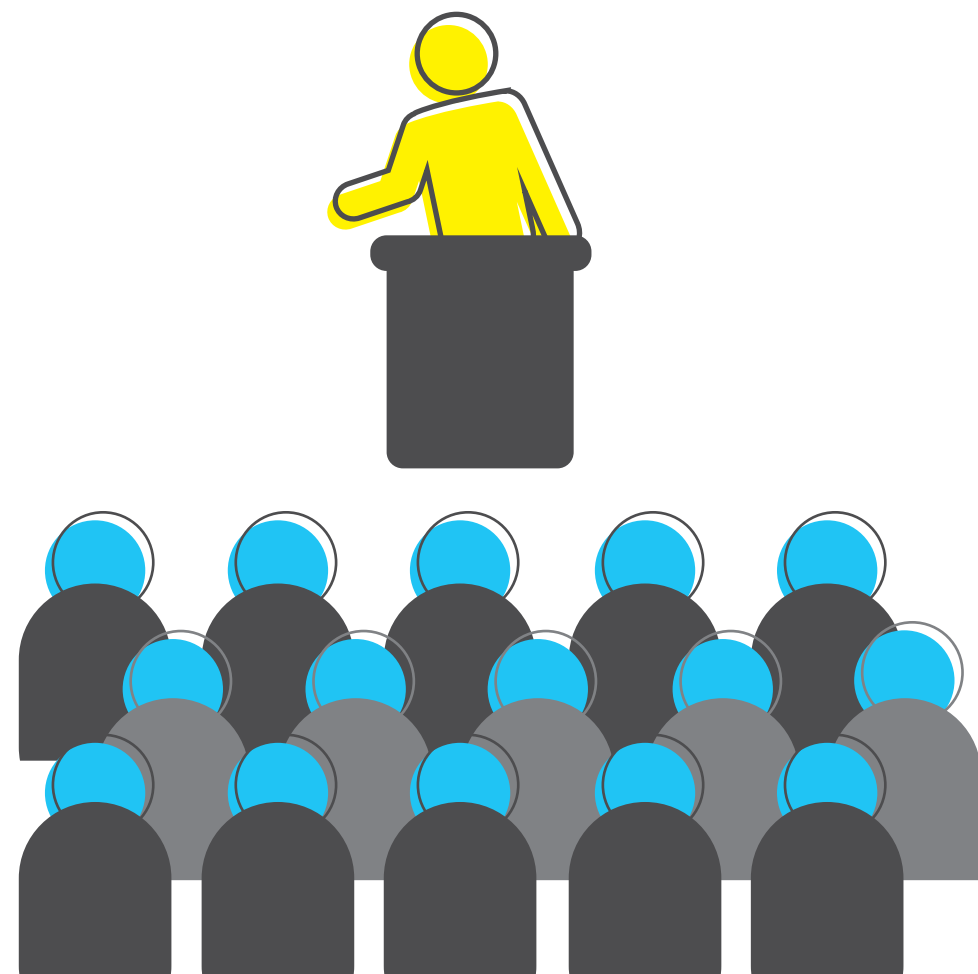


ENSURE EQUITY OF ACCESS

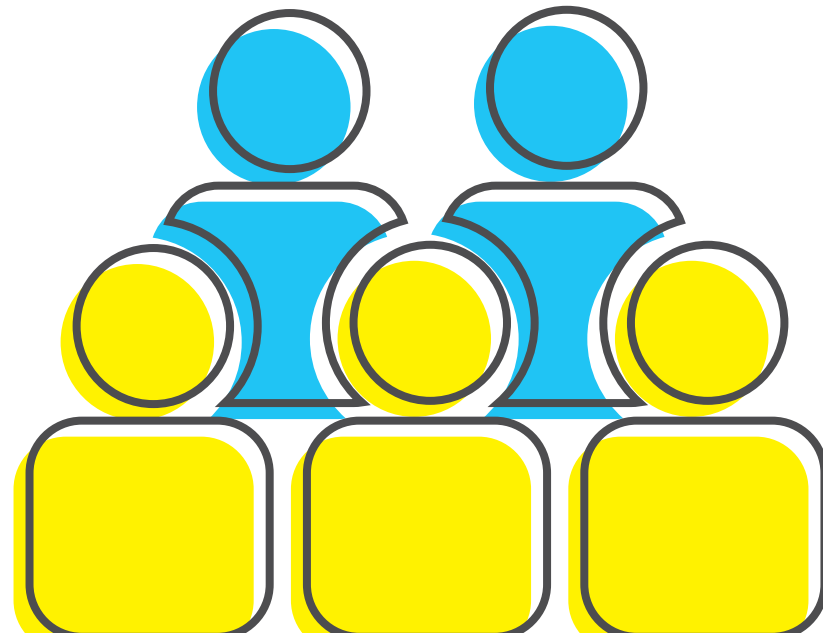
FOR LONG-TERM ENGLISH LEARNERS (LTELS)

Managing in-class access to core grade-level content with **Escalate English**[®], Grades 4–8



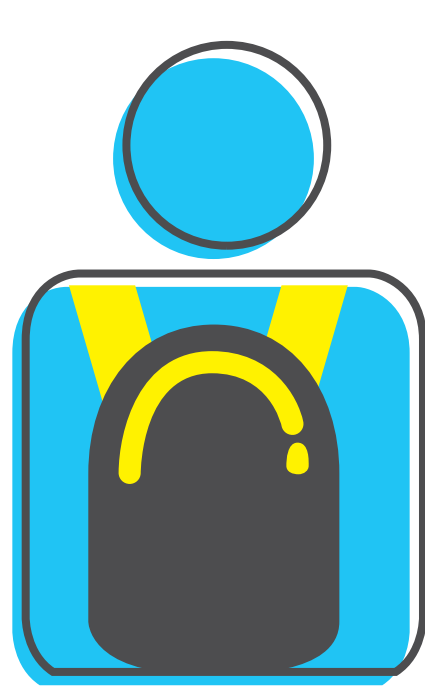
WHOLE CLASS

Deliver your core reading/language arts program lessons to LTELS. This offers many opportunities for them to grow academic language and literacy while benefiting from the language models of all students in the class.



SMALL GROUPS

Use **Escalate English** during small-group reading/language arts time with your LTELS. It delivers grade-level, intensive academic language and literacy support that amplifies success with your core ELA program. Fifteen minute lesson blocks, each with clear beginning and end points, enable you to pull groups of LTELS throughout the day.



INDEPENDENT WORK

When working with other small groups, provide clear guidelines to your LTELS as they engage in the variety of independent practice options and multimedia in **Escalate English**. Designate student buddies to support each other.

Visit hnhco.com/SampleEscalateEnglish to sign up for a **free 120-day sample** of **Escalate English**.

Escalate  English